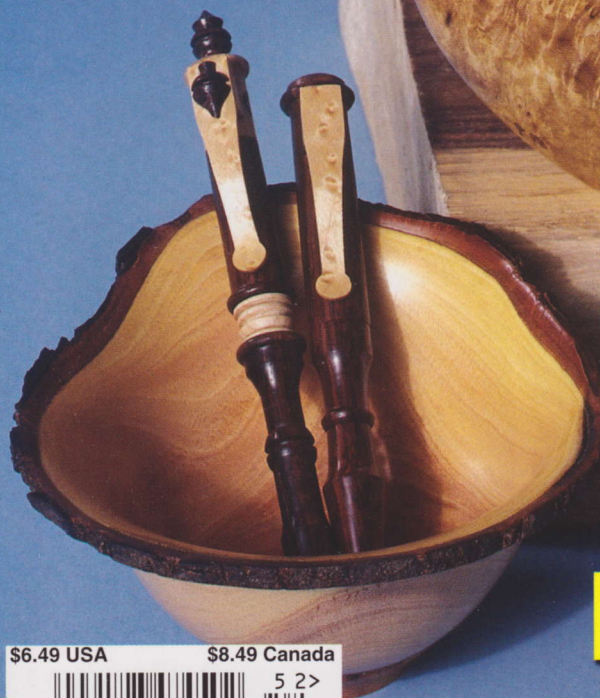


Woodturning Design

Innovative Projects

Gorgeous Laminated Vessels
Small Lidded Boxes
Laminated Pen Clips
Disc Vases
Honey Dippers in
All Shapes & Sizes
and many more!

2 Special Features
Kids Who Are Achieving
in Woodturning



Exclusive!

Airbrushing Your Turnings
Lighting Vessels from Within

\$6.49 USA \$8.49 Canada

5 2>



0 09128 47450 2

Please display until 08/16/05
An All American Crafts Publication

Designer Showcase

Lynne Yamaguchi

Meet the Artist...



Photograph by
Karen Barber

Lynne considers herself a classicist when it comes to woodturning. She loves simple, sensual vessel forms like the Japanese ceramic vessels she grew up with and is drawn to the work of turners such as James Prestini, Bob Stockton, and Bert Marsh. She uses such forms to explore concepts of containment: how vessels contain space and let it spill out; how space enfolds forms; the energy that wood contains, its essential treeness; the containment and preservation of that energy in the finished vessel; and the dynamic between containment and expression, mass and lift, wood and crafter. She also loves exploring the nature of different species of wood. She strives to achieve in each piece

a sense of presence.

A writer, editor, and document designer for two decades, she finds her editing skills particularly applicable in turning. She keeps as inspiration a quotation from Antoine de Saint-Exupéry: "Perfection is finally attained not when there is no longer anything to add but when there is no longer anything to take away" (from *Wind, Sand and Stars*).

Lynne, who lives in Tucson, Arizona, began turning in January 2003. She is a member of the AAW; the Arizona Woodturners Association, in Phoenix; and Desert Woodcrafters, in Tucson. To see more of her work, visit www.lyneyamaguchi.com.



Barkless, Natural-edge,
Mesquite Vessel
3-3/4" diameter



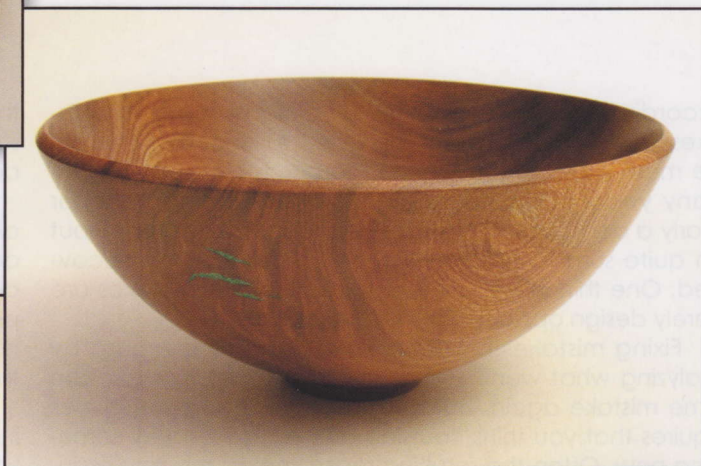
Sapele Box with Birdseye Maple Lid
and Sapele Handle
3-3/16" diameter



Zebrawood Bowl
7-3/4" diameter



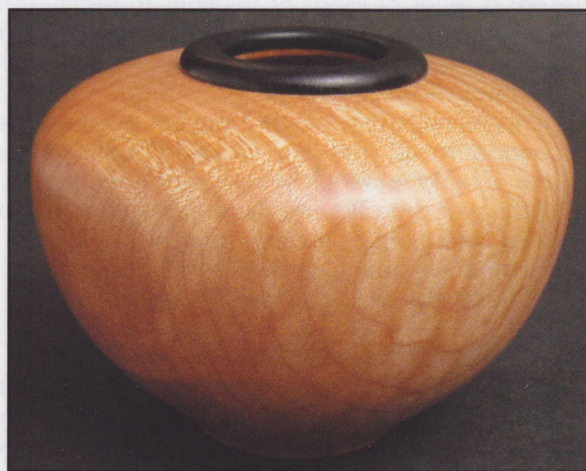
Profile of Zebrawood Bowl
shown on the left



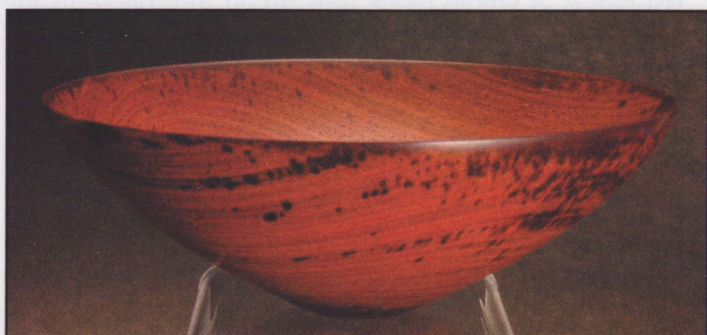
Eucalyptus Bowl
with Malachite Inlay
5-1/4" diameter



"Caffeine Dependency"
Footless Mesquite Cup with
Ring of Coffee Grounds and Epoxy
3-3/4" diameter



Hard Maple Hollow Vessel
with Ebony Lip
3-3/16" diameter



Burmese Rosewood Bowl
5-3/4" diameter